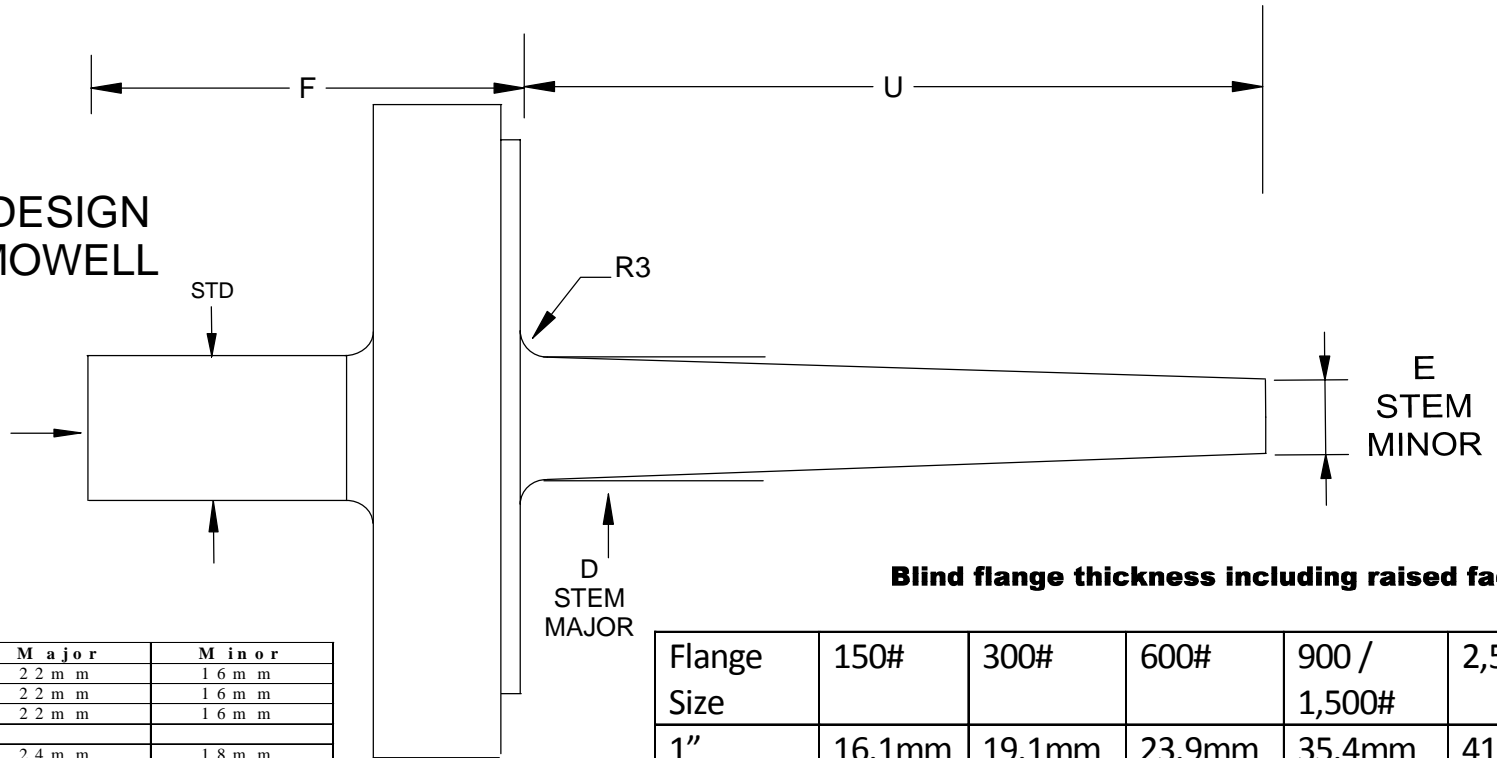


FLANGED TAPER DESIGN BARSTOCK THERMOWELL



STANDARD STEM SIZES

Size	Rating	Major	Minor
1" N B	150 lb R F	22 m m	16 m m
1" N B	300 lb R F	22 m m	16 m m
1" N B	600 lb R F	22 m m	16 m m
1 1/2" N B	150 lb R F	24 m m	18 m m
1 1/2" N B	300 lb R F	24 m m	18 m m
1 1/2" N B	600 lb R F	24 m m	18 m m
1 1/2" N B	900 lb R F	24 m m	18 m m
1 1/2" N B	1500 lb R F	24 m m	18 m m
2" N B	150 lb R F	28 m m	18 m m
2" N B	300 lb R F	28 m m	18 m m
2" N B	600 lb R F	28 m m	18 m m
2" N B	900 lb R F	28 m m	18 m m
2" N B	1500 lb R F	28 m m	18 m m

Blind flange thickness including raised face

Flange Size	150#	300#	600#	900 / 1,500#	2,500#
1"	16.1mm	19.1mm	23.9mm	35.4mm	41.4mm
1 1/2"	19.1mm	22.6mm	28.9mm	38.4mm	50.9mm
2"	21.1mm	24.1mm	31.9mm	44.9mm	57.4mm
Length(F)	57mm	57mm	80mm	80mm	90mm

No.	Specify	Quality assurances Documentation	Certificate Reference
1		Material certificate - flanges	ORIGINAL
2		Material certificate - barstock	ORIGINAL
3		Hydrostatic Pressure test certificates - Internal	1043
4		Certificate - Welding procedures. Partial / full penetration	1043 / 1381
5		Certificate - Four part Dye Penetrant test	1043
6		Hydrostatic Pressure test cert - external	1226 - external
7		NACE - Heat treatment certificate	1045
8		Cleaned for oxygen IEC 60877 Sealed in plastic bag	1055
9		Thermowell calculation to ASME PTC 19.3 TW 2010	1135
10		Tagging	STAMP
11		X-ray	ORIGINAL
12		ITP (specify)	1056, D
13		Other	Specify

TEMPERATURE CONTROLS PTY LTD

QUALITY ENDORSED COMPANY
Certificate No: QEC 14412
AS/NZS 9001:2008

CONDITIONS

THIS DRAWING IS OUR EXCLUSIVE PROPERTY AND MUST NOT BE COPIED OR HANDED TO ANY OTHER PARTIES WITH OUT WRITTEN PERMISSION. IT SHALL BE RETURNED UPON REQUEST

SYDNEY: 7 YAMMA ST SEFTON, NSW 2162
PHONE: (02) 9721 8644 FAX : (02) 9738 9339
MELBOURNE: 8/280 Whitehall St YARRAVILLE, VIC 3013
PHONE: (03) 9687 0000 FAX : (03) 9687 1900
BRISBANE: PO Box 5138 Alexandra, QLD 4161
PHONE: 0418 222 868
EMAIL: sales@temperature.com.au

TITLE

SIZE : A4	DATE : 01/02/13	DWG NO : SD 038FT
SCALE : NTS	DRAWING BY R.B	REV : 06